

## Contact



**JAPAN**

Tokyo

Osaka

*For biological diversity & a beautiful global environment*

# EMATEC



Lecture class for trainee from JICA  
by EMATEC



Osaka Castle Park



Ookawa River (OSAKA)



Seminar on waste-water treatment technology  
for Asian Countries by EMATEC & Ministry of  
the Environment

 General Incorporated Foundation of Japan  
**Environmental Management & Technology Center**

Address : 9-10, Kawaguchi 2-chome, Nishi-ku,  
Osaka 550-0021, JAPAN

Phone : +81-6-583-3262

FAX : +81-6-583-3274

URL : <http://www.ematec.or.jp>

E-mail: [kansai\\_ksuishin@ematec.or.jp](mailto:kansai_ksuishin@ematec.or.jp)

July, 2016

*General Incorporated Foundation of Japan*  
**Environmental Management & Technology Center**

## Outline of the Institute

Environmental Management and Technology Center was established in 1972 as a comprehensive institute for environmental management technology by Japanese Ministry of Economy-Trade and Industry, Osaka Prefecture Government, Osaka City Government and Osaka Chamber of Commerce.

### Profile

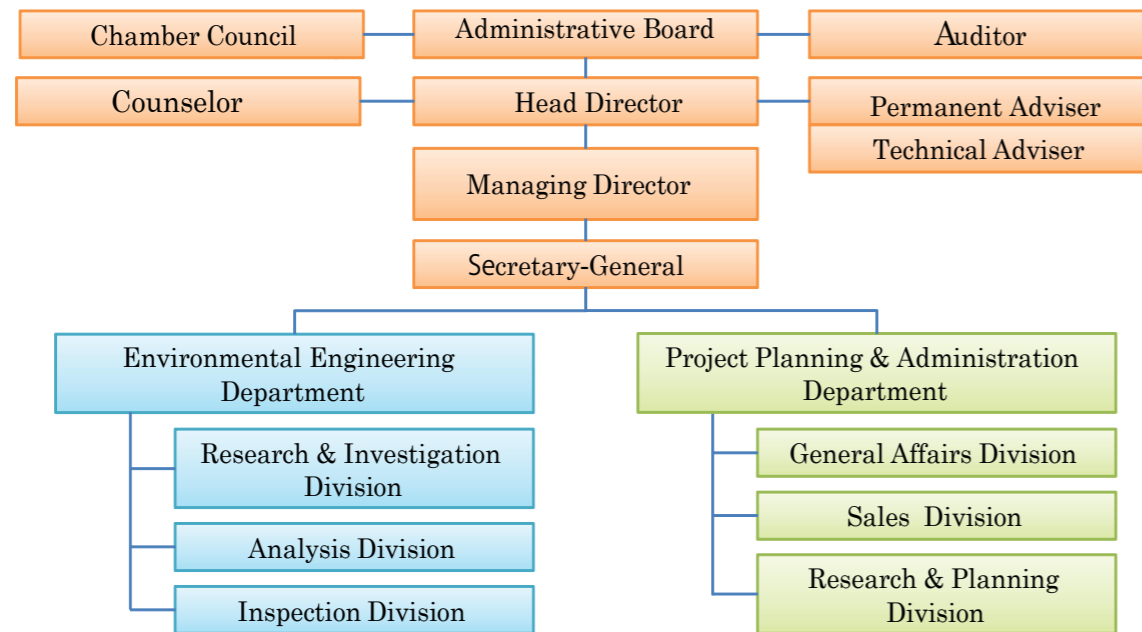
Name : Environmental Management and Technology Center (a.k.a.: EMATEC)

Established : October 1, 1972

Representative : Yasuhiko Taniguchi / Head Director

Number of directors and employees : 65

### Organization Chart



## Main Services

### Environmental Investigation and Analysis

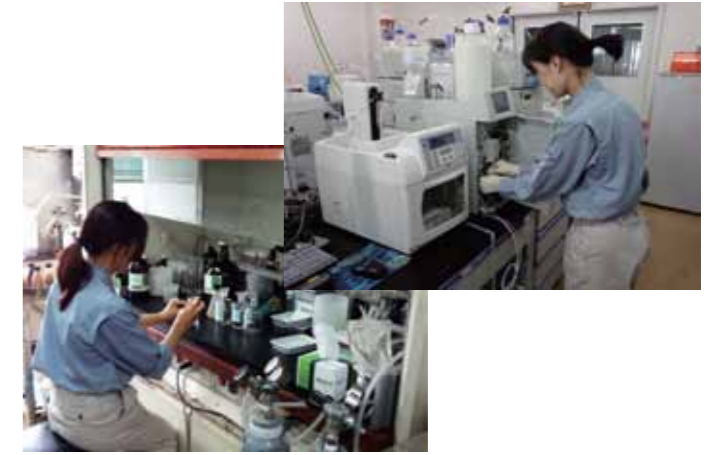
- Air pollution
- Water contamination
- Noise and Vibration
- Offensive odor
- Soil and Sediment contamination
- Dioxin and endocrine disrupter
- Asbestos sampling and analysis
- Agricultural chemicals
- Eutrophication in river, lake and sea
- Biological assessment



- Acid rain
- Sewage and Wastewater
- Industrial and domestic wastes
- Meteorological observation

### Inspection and Measurement

- Drinking water quality inspection
- Small-scale water-supply system inspection
- Leaching test for Water supply equipments
- Working environment measurement
- Air environment measurement
- Radiation inspection
- Photocatalyst material evaluation



### Environmental Impact Assessment and Environmental Management Planning

- Environmental assessment, forecast and measure  
(Industrial park, Large-scale retail store, Urban development, Waste disposal facility, etc.)
- Local environmental preparation plan

### Environmental Monitoring and Assessment

- Design and construction of environmental surveillance system for Post-survey of assessment :  
Installation of monitoring building and automatic measuring equipments ( air pollution, noise and vibration, etc.), daily measurement and maintenance, data analysis, etc.
- Monitoring riverine environment ( water and sediment quality, aquatic organism, etc.)
- Maintenance of automatic water quality observation equipments for sewage-treated water

### Consulting Services

- Consulting for soil contamination countermeasures
- Planning for waste disposal system and facility
- Recycling of resources
- Consulting for environmental management



## Public Services & Others

- Educational business - lecture class on environment management
- Publication of the environmental information magazine "EMATEC"
- Environmental free consultation services
- Seminar related with environment

